

# LEGENDS AT MARICAMP

## 310 MULTI-FAMILY UNITS ON 37.24<sup>±</sup> ACRES

SE OCALA, MARION CO., FLORIDA



### CIVIL PLANS APPROVED - PERMIT READY

Multi Family Development Opportunity.... 37.24<sup>±</sup> acres approved for 310 Garden Style apartments. Prime SE Ocala location with strong demographics and great school districts... Elementary (South Ocala); Middle (Osceola); High (Forest). Access via Four Laned City Highway with Lighted Intersection (improvements currently under construction). 2.5 miles to downtown Ocala. New 7-11 being constructed at this shared intersection and an Regional Day Care Facility proposed on adjoining parcel.

Building plans include 96 (3br/2ba), 176 (2br/2ba), 32 (1br/1ba) and 6 (3br/2ba duplexes). 35,500 Average Daily Traffic Count. Walking distance to Publix and HCA Emergency Care.

There is not a better multi-family site in Marion County!

Call today for more info.

**\$23,548 PER UNIT**  
**(\$7,300,000)**

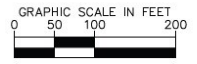
Data contained herein is for informational purposes only. Buyer must perform their own inspections on the land

**McBRIDE**  
**LAND & DEVELOPMENT CO.**  
Licensed Real Estate Broker

Phone: (352) 401-3755

Mobile: (352) 362-5226

[www.mcbrideland.com](http://www.mcbrideland.com)



SE 25TH AVE UNDER CONSTRUCTION

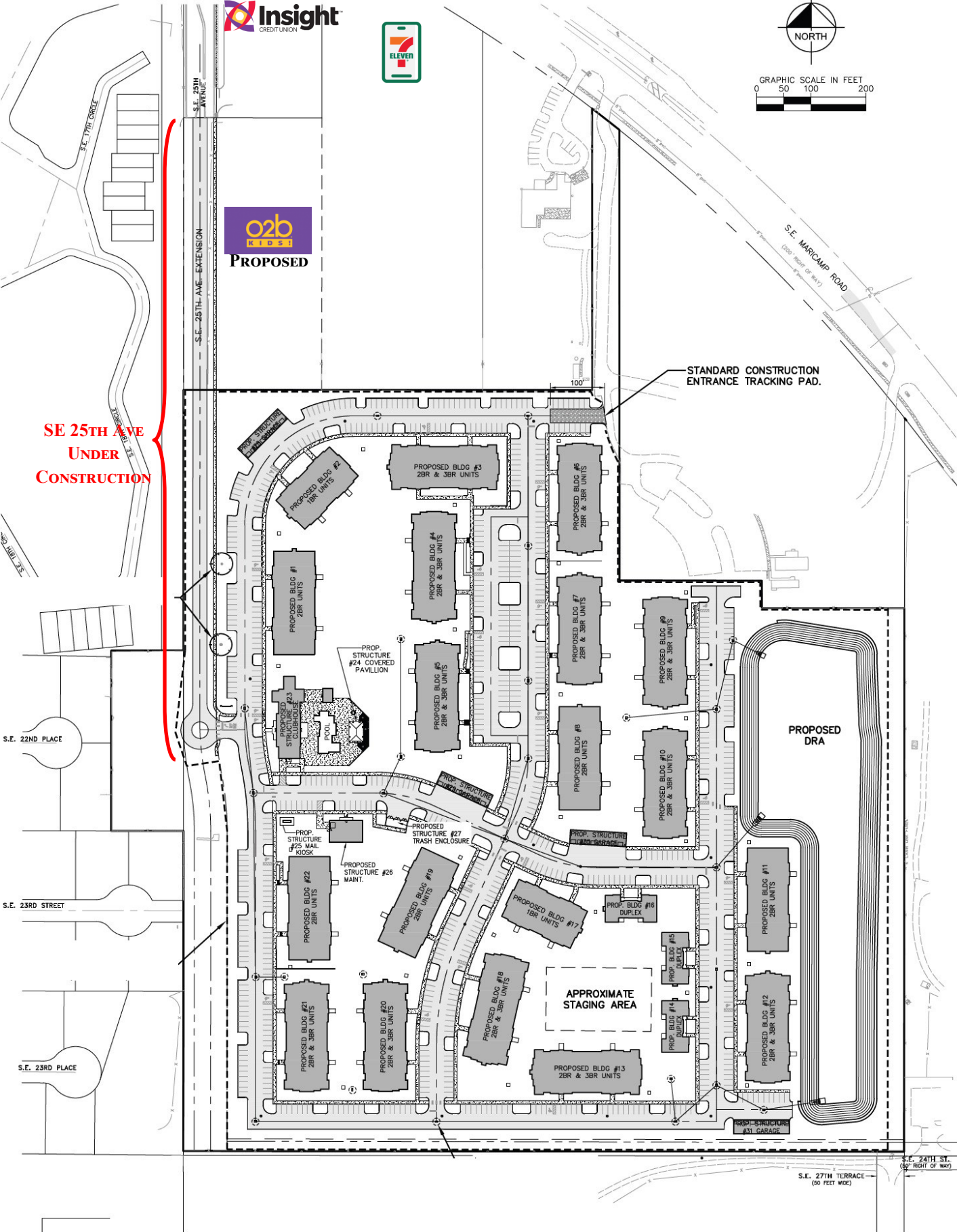
STANDARD CONSTRUCTION ENTRANCE TRACKING PAD.

PROPOSED DRA

APPROXIMATE STAGING AREA

S.E. 27TH TERRACE (50 FEET WICK)

S.E. 24TH ST. (50' RIGHT OF WAY)

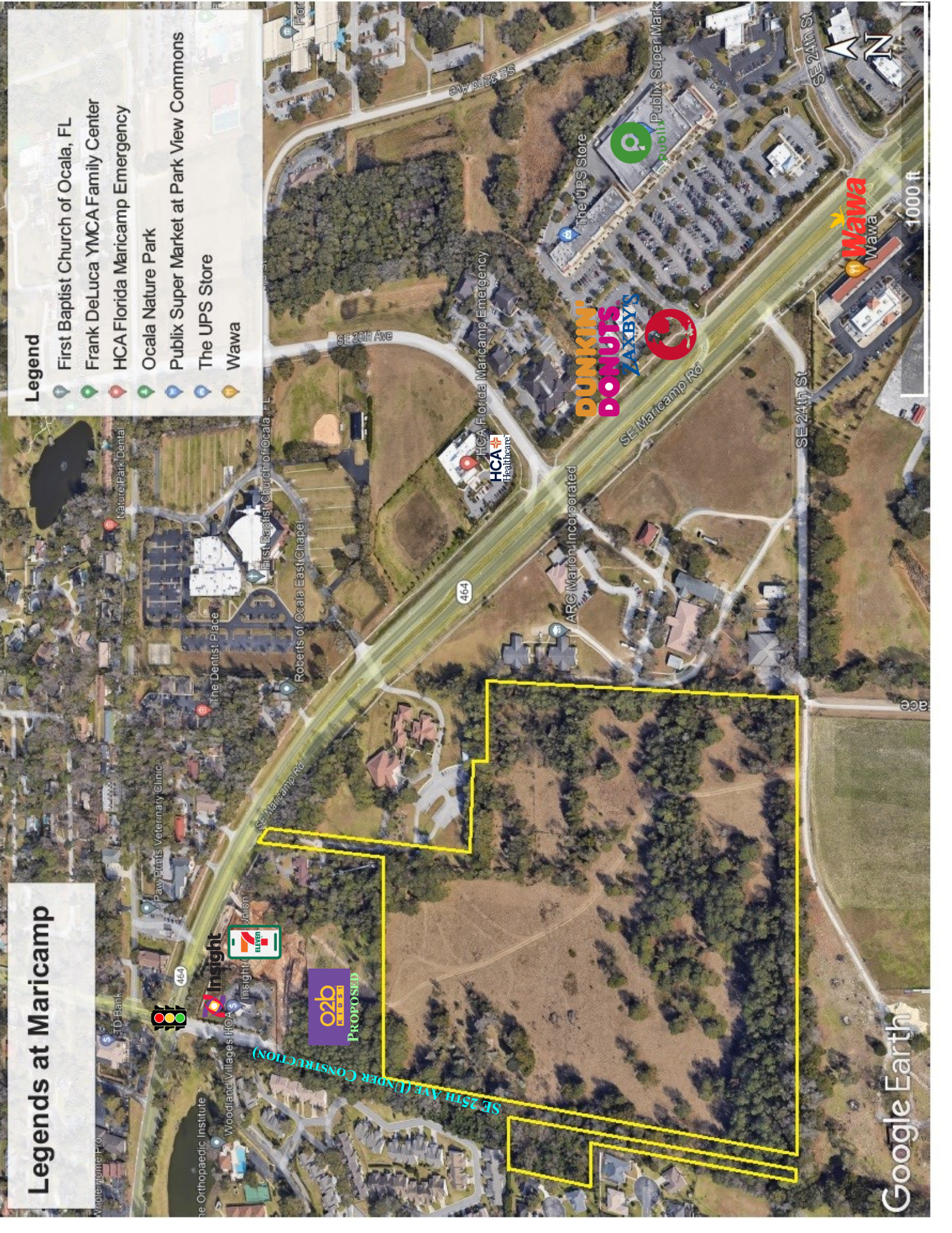




# Legends at Maricamp

**Legend**

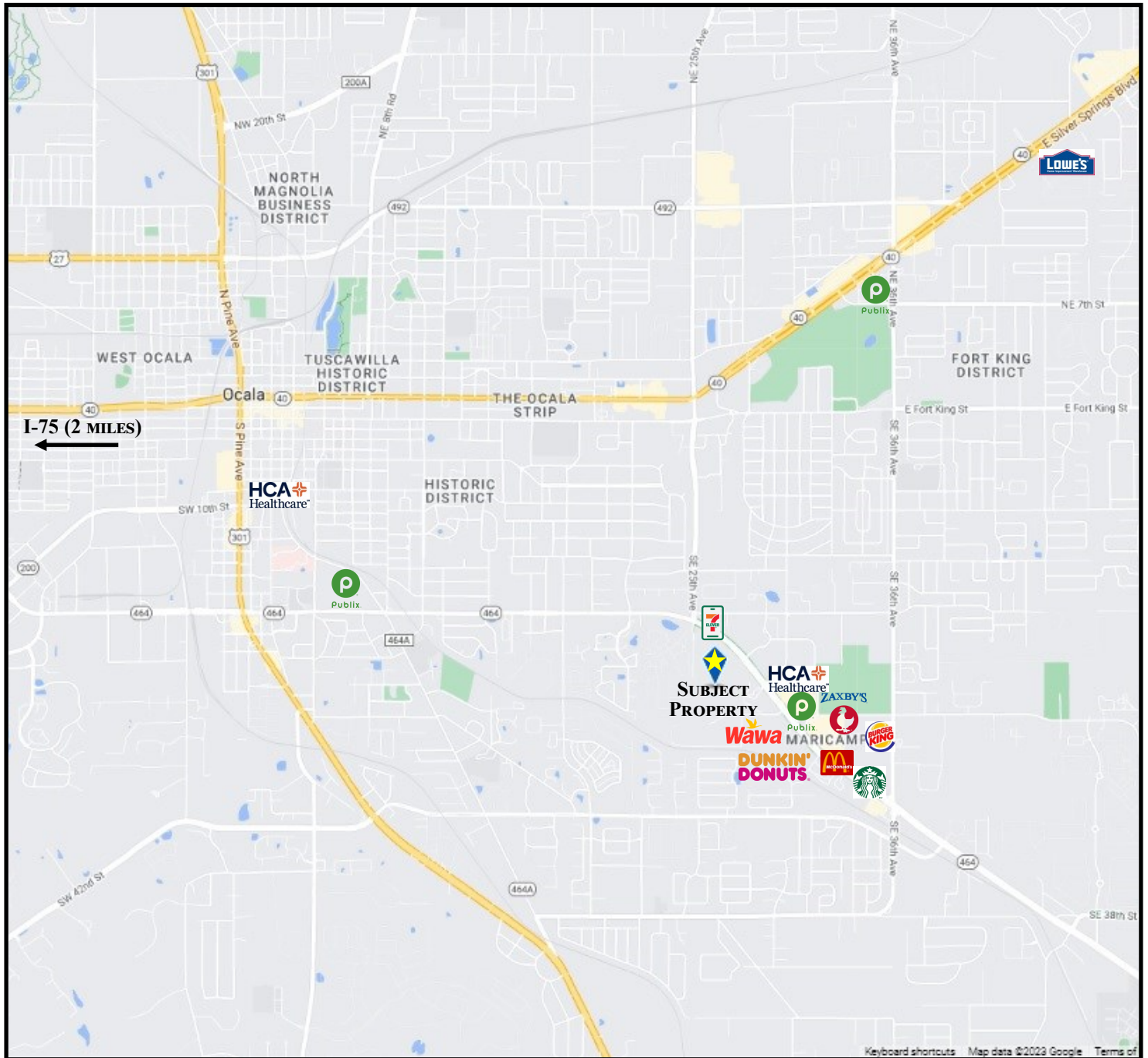
- First Baptist Church of Ocala, FL
- Frank DeLuca YMCA Family Center
- HCA Florida Maricamp Emergency
- Ocala Nature Park
- Publix Super Market at Park View Commons
- The UPS Store
- Wawa





# DIRECTIONS

## LEGENDS AT MARICAMP - 310 UNIT APARTMENT SITE



SHOWN BY APPOINTMENT ONLY

**2700 SE MARICAMP ROAD, OCALA, FL 34471**

Property located at the SE Intersection of SE 25th Avenue and SE Maricamp Road (aka 17th Street). Alternative access points also available at NW Corner of SE 24th Street and SE 27th Terrace and also via a private/shared drive between Strive Physical Therapy and Church of Christ.